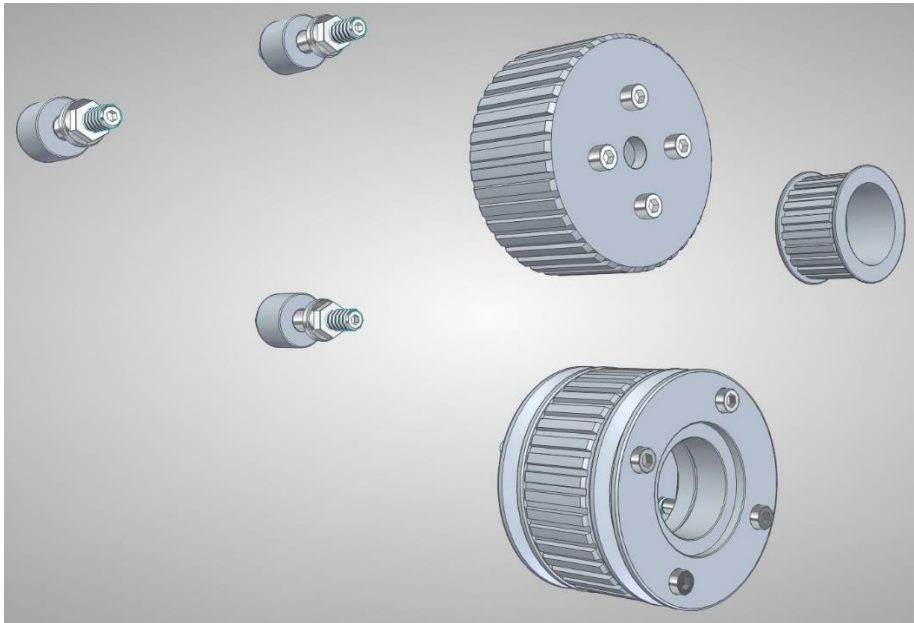




## Holden 5L EFI Gilmer Drive Kit

AF64-3006 & AF64-3006BLK



This kit replaces the factory v-belt on the water pump and alternator with a Gilmer belt for improved looks and performance while allowing the retention of the factory power steering and air conditioning on VN-VS Holden 5 litre and 5.7 litre Commodores.

**Important note:** Use of this kit requires purchase of new belts (not included), an Aeroflow Gilmer belt AF65-1006 (available from your local Aeroflow stockist) as well as an 11A1055 v-belt for the power steering and a 13A785 v-belt for the air conditioning (v-belts available from most good quality spare parts outlets).

### Before Installation:

- Disconnect the battery
- Remove all v-belts
- Remove mechanical fan and water pump pulley
- Remove the v-pulley from the harmonic balancer.
- Disconnect and remove the alternator

### Installation:

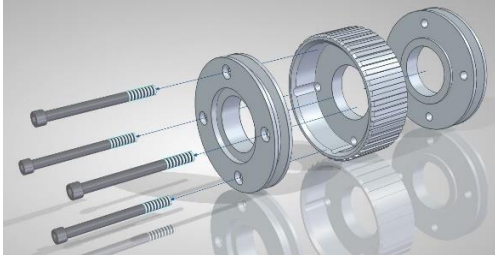
- To compensate for the increased width of the Gilmer belt the power steering pump needs to be spaced forward with the included spacers and studs. Remove the 3 nuts that attach the power steering pump to the cylinder head and remove the factory studs. Replace the factory studs with the longer ones provided

**[www.aeroflowperformance.com](http://www.aeroflowperformance.com)**



and fit the supplied spacers between the cylinder head and the bracket. Fit the washers and nuts but leave them loose at this stage.

- Assemble the 2 v-belt pulleys and the lower Gilmer pulley, the v-belt pulley without recesses for the bolts is fitted closest to the engine followed by the lower Gilmer pulley with the open side facing away from the engine and finally the v-belt pulley with the recesses goes on last. Fit with the long bolts and tighten.



- Remove the v-pulley from the alternator with care and fit the Gilmer pulley and re-fit the alternator. Changing the alternator pulley may require the use of specialised tools, if you're unsure we recommend you take your alternator to a mechanic or auto electrician to have it changed.
- Fit the new water pump pulley with the supplied bolts if no mechanical fan is fitted or re-fit the mechanical fan and the new water pump pulley with the factory bolts.
- Fit and adjust the new air conditioning belt as per manufacturer's specifications.
- Fit the Gilmer belt and adjust so that when adjusted the belt can be turned at approx. 50% between pulleys (refer figure A). Some people will adjust the belt tighter in the hope of getting more 'whine' from the belt, this is NOT recommended as it will quickly wear out alternator and water pump bearings.



Figure A

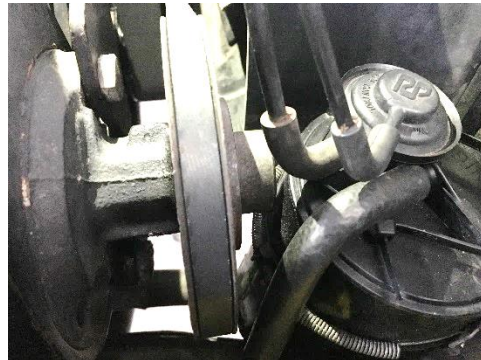


Figure B

- Fit the new power steering belt and tension to manufacturer's specification.
- Check for clearance between the power steering pump and the carbon canister (refer figure B), some minor modifications may be necessary to provide enough clearance.
- Double check that all bolts are correctly tightened, the belts are correctly fitted and adjusted and the wiring to the alternator has been correctly re-connected. Make sure that nothing will foul on any moving parts.
- Reconnect the battery and enjoy your new Gilmer kit

**[www.aeroflowperformance.com](http://www.aeroflowperformance.com)**