



# Radiator Cap Cover AF463-0032 & AF463-0042 Installation Instructions

Congratulations on your purchase of Aeroflow Performance Product. These instructions must be read and fully understood before beginning installation. Should you have any questions, please call technical support on +61 2 8825 1900 Please have the product number on hand when calling.



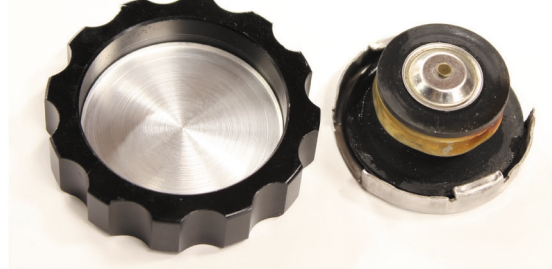
1. First identify what size radiator cap you have, There are two main sizes typically found world wide small size is 32mm O.D. and large size is 42mm O.D. Note: O.D. measurement excludes the ears.



2. Remove the ears from each side of the cap as shown. WEAR SAFETY GLASSES!



3. Take enough material from the cap to create as close to round as possible.



4. Ensure radiator cap is similar finished size as cover hole for tight fit.



5. Fit the cap to the radiator and tighten.



6. Use a small amount of adhesive silicon a rough size of 13mm / 1/2"



7. Fit the Aeroflow Radiator cap cover in the position you desire and press firmly, being careful not to damage the radiator



8. After allowing sufficient time for the silicon to dry, Remove the radiator cap and check to make sure the cap has been fitted deep enough into the cover. Check coolant level is correct, Re-Fit Radiator cap and Happy Motoring!!